



Frequently Asked Questions (FAQs) – Online Courses offered by Empower School of Health

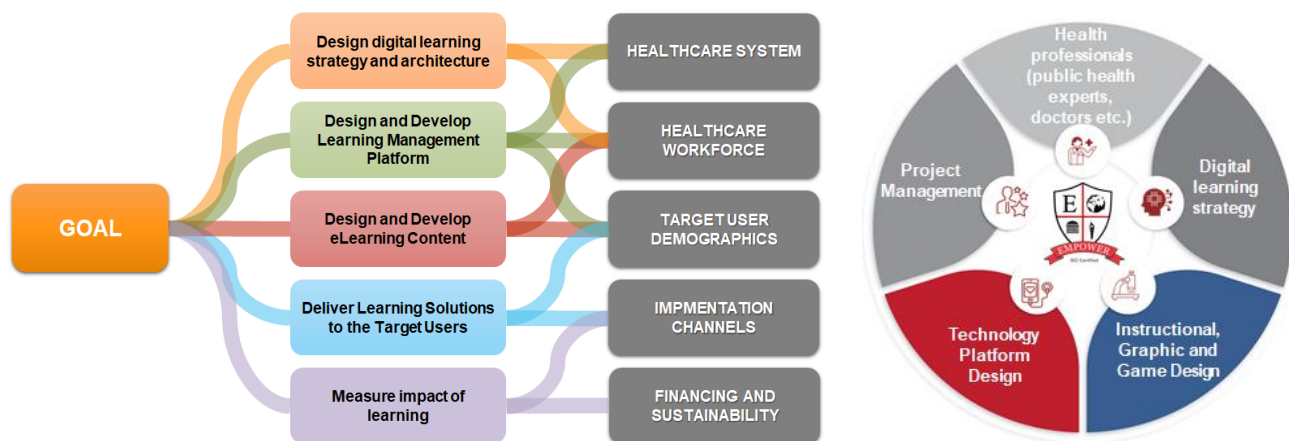


Contact us:

Empower Swiss SARL, Rue Blavignac, 10, 1227 Carouge, Geneva, Switzerland
E-mail : info@empowerschoolofhealth.org | www.empowerschoolofhealth.org

About Empower

Empower is a leading global training and capacity building organization and has worked across 100+ countries in multiple languages to strengthen institutional and HR capacity of global health & humanitarian programs through design and development of blended learning content; design, development, hosting, and maintenance of learning management systems; training and capacity building activities (f2f and virtual); impact measurement; and monitoring and evaluation, etc. *Empower has developed and delivered more than 1,000,000 (one million) hours of capacity building content to nearly 200,000 public health and supply chain professionals in 100+ countries.* Click, [Here](#) to know more about Empower



Empower has gained many recognitions in acknowledgement of its commitment to quality in education:

- ISO 9001:2015 and ISO/IEC 40180:2017 certified in the following areas: providing Digital Learning Platform Ecosystem, Digitization of Content, Developing New Online Courses and Designing Online Competency Assessment Tools.
- Accredited by Accreditation Service for International Schools, Colleges & Universities (ASIC) and designated as an ASIC Premier Institution. ASIC Accreditation is an internationally respected quality standard for schools, colleges, universities and online learning providers.

Complete List of Courses offered by Empower

The courses offered by Empower provide a strong link between Public Health, Healthcare Management, and Procurement and Supply Management (PSM) addressing all the needed skill sets whilst still being affordable for low-income countries.

Click [Here](#) to know about the courses offered by Empower

Frequently Asked Questions (FAQs)

1. Who can take courses with Empower?

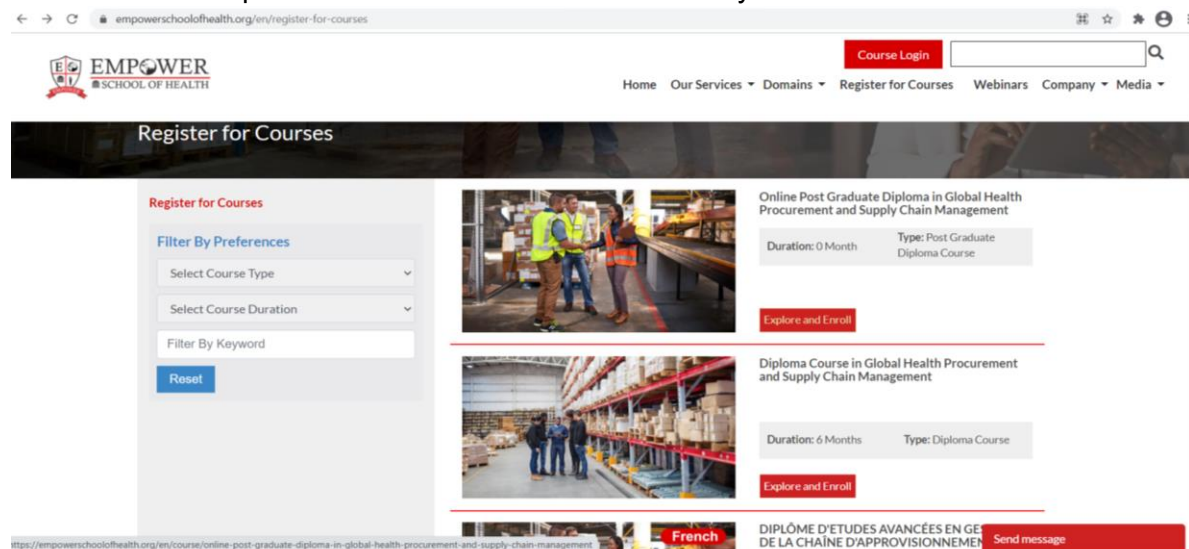
The courses prepares the participants for the world of procurement and supply chain of healthcare products. It provides a solid overview of PSM issues including the role of government policies, donors, manufacturers, procurement agents, and more. The course is targeted at health professionals in public health programs (donors, government, NGOs, civil society, academia) and people interested in becoming supply chain/logistics professionals.

2. How do I apply for a course?

You can apply online for our courses. The steps are given below-

1-Visit the link given [Here](#)

2-Click on the “Explore and Enrol” button for the course you want to enrol in.



3-Fill all the required details on the application form and submit.

4-Post successful submission, Empower will connect and assist you for further process.

3. When can I enrol and start a course?

The courses can be initiated at any time in close collaboration with the student coordinator and faculty members of Empower School of Health.

4. Do you offer scholarship to the candidates?

Yes, we do provide scholarships to the candidates. Please contact us on info@empowerswiss.org for details.

5. How are online courses taught?

The andragogic methods utilized in the course provided by Empower is delivered through a web- based platform to enhance teaching-learning experience for the students. Here the emphasis is learning and application rather than memorizing. The basic course structure follows module-based learning and this includes a combination of online virtual lectures and additional study material for inter-active discussions, case studies, assessments, assignments and recommended readings from journals, articles, and textbooks.

6. Can we take the courses in offline learning?

Yes, you can access all the reading material online and study offline as well. This is a new feature that has recently been added. If you need more information on how this works, please contact the student coordinator.

7. Do you offer the course in some other languages also?

We offer courses in English and French.

8. Is there an attendance check?

Attendance for each student gets recorded on the course portal. Students will be required to complete their enrolled scheduled course contact hours, and then the student will be eligible to proceed to the next module.

9. What are the course evaluation methods for the students?

The knowledge gained by students is evaluated on an ongoing basis over the duration of the program, either through self-assessments (not graded) or formal assessments (graded). The evaluation methods range from a mix of objective assessments such as multiple-choice questions and interactive quizzes to offline assignments such as case studies.

Note that the above-mentioned evaluation methods depend on the course you have opted for.

10. Can I get an extension in the course?

If you are unable to complete the course within the duration of the course due to unforeseen technical or non-technical reasons, we provide you an extension for certain duration without any additional charges. However, if you do not complete the course within the extended time frame, you can still get an extension.

Contact courseadmin@empowerschoolofhealth.org or training@empowerschoolofhealth.org for details.

11. Is it possible to switch from English course to French course?

Yes, please contact the course admin for details.

courseadmin@empowerschoolofhealth.org or training@empowerschoolofhealth.org

12. Will this course help me professionally? Will it help me get a job?

Of course, yes, this all depends on the nature of the job, and the job requirements. Many of our students are working for Ministries of Health, UN agencies, international NGOs, and this course has helped them to understand the specifics of global health, health products, procurement and supply chain. Many of our graduates are working in very senior director, CEO and Chief of Party positions, and they are willing to support the Empower alumni in their career planning.

13. Are Empower courses and institute accredited?

Yes, Empower School of Health and our courses have been accredited by several international and national bodies including Accreditation Service for International Schools, Colleges & Universities (ASIC), International Organization for Standardization (ISO), Pharmacists Council of Zimbabwe (PCZ), National Pharmacy Council (NPC) Rwanda, and by [Kent State University](#) (KSU). Click [Here](#) for details.

14. How to verify the authenticity of the certificates?

There is a QR code printed on the certificates, which can be scanned to get details about the course and learner. This QR code has been implemented from 2021 onwards.

15. How can I be in touch with Empower and re-connect with fellow colleagues post completion of my course?

Empower's Alumni Network helps connect all of our Empower people, past and present, to more opportunities, more resources and more of the people they need to know for the future.

We have a strong alumni base of 10,000+ public health professionals across 100+ countries in Asia, Africa, Europe, and the Americas and they form an active part of our extended Empower family. Many of them have gone on to hold important positions in their respective home country government systems or in the private sector. Click [Here](#), to know more

16. What about privacy and security of my details/data?

Empower server are hosted on Amazon cloud which is in today's times one of the safest ways of securing data online. Refer to our privacy policy and terms of use for more details. We only use your details to share new courses and career information with you.

Click [Here](#), to know more about the Terms and Conditions

17. How do I learn more?

To know more, you can visit our website <https://empowerschoolofhealth.org/> or

Contact us on courseadmin@empowerschoolofhealth.org or training@empowerschoolofhealth.org